



DASI

Domestic Abuse & Sexual Assault Intervention Services

2018 ANNUAL REPORT



Stop
STOP
Domestic
Abuse
NOW
-Britt T.
2015

Love Shouldn't Hurt
1-800-799-SAFE
NITE DOMESTIC VIOLENCE HELPLINE

Domestic Violence
is the **LEADING**
cause of injury to women -
more than car accidents,
muggings AND rapes
COMBINED.
STOP This Madness!!

STOP
Domestic
Violence
is the
LEADING
cause of
injury to
women -
more than
car accidents,
muggings
AND rapes
COMBINED.
STOP This
Madness!!



In 2019, DASI will celebrate serving the Sussex County community for 35 years. It is fitting that the past year has been marked by new projects and initiatives that broaden our reach throughout the county and deepen the level of services and support we can offer to victims of domestic and sexual violence. In the past year, we've successfully launched a new 24-Hour Text Line, Trauma Focused Cognitive Behavioral Therapy (TF-CBT) sessions for children who have been affected by domestic violence, a county-wide Municipal Court Legal Advocacy Program, and On Campus at Sussex County Community College.

I am so grateful for the donors, volunteers, and community partners that allow us to serve our local community. Most importantly, I am grateful to our clients who honor us with their trust, their stories, and the incredible work they do to survive and thrive after violence has infiltrated their lives. So many of our clients go on to help others in the same situations that they themselves have faced – an act of selflessness and bravery that I find deeply moving.

Thanks to you, I'm certain that DASI will continue to thrive and serve our local community for many years to come until a time when our community is free from domestic and sexual violence. Thank you for sharing your resources, your support, your passion and your commitment with us as we build a better future together.

Jennifer Cable
Board president



Another year under our belts, with all the challenges and accomplishments that come with a year at DASI. We launched new programs and projects, all with an eye toward reducing the impact of trauma on survivors of domestic and sexual violence and human trafficking. We welcomed new staff and volunteers, including two babies and a few new grandchildren! We kept individuals and families safe from harm, supported them through crises, and helped them through difficult times. We provided housing for the homeless, food for the hungry, and clothes for those in need. We were available to assist 24 hours/-day, 7 days/ week for 365 days. And, we brought the issue of power-based violence into the public consciousness through education and prevention initiatives.

All of this and more, only made possible through the generous support of our community, the federal government, the state of New Jersey, the County of Sussex, private foundations, local businesses, individual donors, community partners, and volunteers.

This year we were especially challenged by repairs needed in our beautiful historic buildings and are in the process of meeting those challenges. We are dedicated to maintaining the unique warmth, character, historic significance, and value of the DASI Community Outreach Center and Step by Step Transitional Living Program apartments, and we are extremely grateful for the help in those efforts.

As always, we are challenged to meet the wide array of needs in our community and continue to count on the generous support of the people and businesses of Sussex County. We sincerely thank you for that support, in all of its forms!

Jamie Bernard
Executive Director



2017-2018 BOARD OF TRUSTEES

Jennifer Cable,
President

Veronica Weston,
Vice President

Laura Lampron,
Treasurer

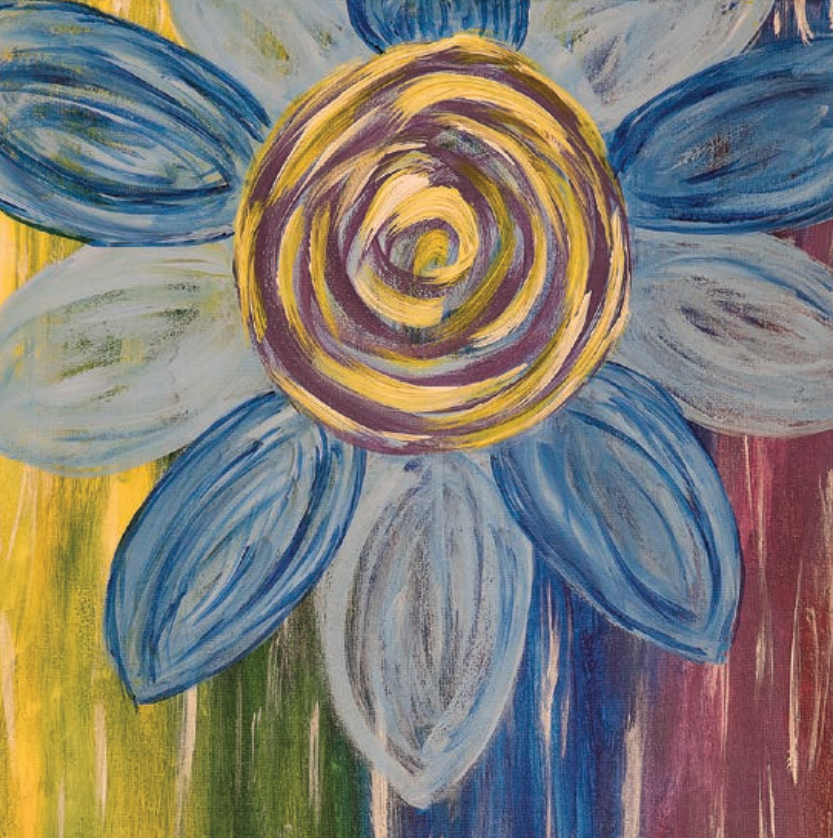
Jennifer Lepore,
Secretary

Nancy Jacobus

Mary Gebhard

Jamie Bernard,
Executive Director

Debora Meltz,
Board Member Emeritus





PROGRAM HIGHLIGHTS

The **DASI 24-Hour Helpline and Text Line** are available to callers in need of emergency shelter, support, information, and referrals to community resources for themselves or for someone they care about. **24-Hour Helpline 973-875-1211**. This year we established the **24-Hour Text Line for Deaf and Hearing Impaired Individuals 973-222-2593**. Collect and anonymous calls are accepted.

1,629 total calls received, **1,406** regarding domestic violence and **223** regarding sexual assault

Residential Services

The DASI Emergency Safe House...when home isn't safe.

Step by Step Transitional Living Program

DASI provided safe and supportive haven for **51** victims of domestic/sexual violence and human trafficking: **33** adults served including **30** women, **3** men, and **18** children with a total of **5,299** bed nights.

Counseling Program

Trauma-informed counseling and evidence-based group models form the basis of the DASI Counseling Program. An empowerment-based, psychoeducational approach can assist a survivor with understanding the impact of domestic and sexual violence, can help weigh options for the future, and enhance the healing process. **150** survivors served with **646** group and individual counseling sessions.

The Trauma Recovery and Empowerment Model (TREM)

We are grateful to grants from Sussex County Grant-in-Aid and the NJ Division of Criminal Justice Office of Victim Witness Victim Assistance Grant that enabled DASI to introduce TREM, the Trauma Recovery and Empowerment Model group. TREM is a fully manualized and evidence-based intervention designed to facilitate trauma recovery among women with histories of exposure to sexual and physical abuse. The 24-session group emphasizes the development of coping skills and social support. Drawing on cognitive restructuring, psychoeducational and skills-training techniques, TREM addresses both short-term and long-term consequences of violent victimization, including mental health symptoms, especially posttraumatic stress disorder (PTSD), depression, and substance use disorder. **12** adult women participated in **18** sessions of the TREM group and **54** sessions of individual counseling.

The RiseUp! Poetry Group

It is year two for our poets as they stretch their creative muscles and work on their second volume of poems and artwork. RiseUp! is an ongoing series of monthly poetry meetings where survivors of Domestic and Sexual Violence gather to read, write, and share healing poetry. **8** poets participated in **24** RiseUp! Poetry sessions.



Children's Services

The littlest victims of domestic violence often suffer greatly, but with positive interventions can be helped to heal. The **18** children that resided in our Emergency Safe House and Step by Step Transitional Living Program had numerous services and resources available to them, from a liaison to their schools, to case management, to recreational activities, to counseling.

Introducing Trauma Focused Cognitive Behavioral Therapy (TF-CBT)

Toward the end of this fiscal year, through a generous grant from the NJ Dept. of Children & Families, we launched TF-CBT sessions for children ages 3-18 and their parents/guardians. **7** children were referred to the program, and **4** began participation. This therapy provides:

- Education about trauma and common reactions
- Help with parenting and behavior problems
- Relaxation/Stress Management training
- Information about feelings and ways to express them
- Exploration of thoughts, feelings, and actions
- Creative ways to help kids talk about what happened
- Help to change any unhelpful thoughts about the trauma
- Family sessions to help the family talk together about the trauma
- Education and opportunities to practice safety skills

Legal Advocacy Program

Legal advocates helped **279** victims of domestic and sexual violence in Sussex County Superior Court, municipal courts, and in our Community Outreach Center. Legal Advocates help victims to better understand their rights under the law; work with victims on developing safety plans to address immediate and future safety concerns; assist with court preparation; accompany victims to civil and criminal legal proceedings; connect victims to other community services; and, provide crisis intervention, education, information and referrals.

Case Management Services

Advocacy on our clients' behalf and linkages with other community services and resources can be critical for both residential and nonresidential clients working to get their lives back on track after domestic or sexual violence. DASI Case Managers helped **43** individuals connect with other services and resources that could be of help.

Domestic Violence Liaison (DVL)

The Domestic Violence Liaison Program (DVL) is an innovative partnership of the NJ Department of Children and Families, the Division of Child Protection & Permanency (DCP&P), and the NJ Coalition to End Domestic Violence at the state level, and the DCP&P local offices and domestic violence agencies at the county level. The goal is to strengthen and enhance the service coordination between New Jersey's child protection and domestic violence systems to bring about improved safety and well-being outcomes for women and children when child abuse and domestic violence co-occur.

The DVL assists DCP&P casework staff in the assessment and service provision of DCP&P protective service cases where domestic violence may be occurring, assist domestic violence providers in the identification of possible protective service cases that should be referred to DCP&P, and to help coordinate services for clients. The DV Liaisons provide on-site case consultation, safety planning, support, information and referral, and advocacy for the non-offending parents and their children.

The DASI DVL served **102** individuals, participated in **737** case consultations, and presented **4** trainings to DCP&P staff on the topics of the effects of domestic violence on children, DASI services overview, women's use of force, and a training based on the video "The Mask We Live In".

Domestic Violence Response Teams

Trained volunteers meet with victims of domestic violence at police stations after a domestic violence incident to provide information and support to victims and their children. This year **27** volunteers responded to **105** call-outs.

Sexual Assault Response Teams

Undergoing a forensic exam or a law enforcement investigation can be frightening for a sexual violence victim. Trained Sexual Assault Response Team advocates meet with victims of sexual assault at hospitals and police stations after a sexual assault has occurred to provide support, information and advocacy to the victim. This year we provided **12** Medical/Forensic Accompaniments and **11** Law Enforcement Accompaniments for **18** victims of sexual violence.



Prevention & Education Team

DASI's Prevention and Education Team presented **67** programs to **2,699** teens and adults in the community.



On Campus at Sussex County Community College

DASI is proud to report on the activities accomplished throughout the first year of holding office hours at the Student Center at Sussex County Community College. We are excited by the success of this collaboration and so grateful to SCCC for their support and to Project Self Sufficiency for generously partnering with DASI on this endeavor.

In total, DASI staff held **241** office hours from October 2017 to May 2018, spent **51** hours at outreach and awareness events, and reached over **350** students during office hours and through various educational programs and outreach events.

DASI presented the Media Literacy: Gender, Violence, and Our Culture curriculum to over **220** students and staff. **164** participants completed evaluations. Based on the Media Literacy Program evaluations: 77% of students agreed or strongly agreed that they better understood how social norms that promote gender equality are a protective factor for the prevention of sexual violence; 80% agreed or strongly agreed that their knowledge of resources to improve social norms that promote gender equality had increased; 77% agreed or strongly agreed that their awareness of the importance of social norms that promote gender equality had increased; and 73% of students were willing to do something about social norms that promote gender equality.

25 students attended a screening of the film Tough Guise 2: Violence, Manhood, & American Culture. In this film, an anti-violence educator and cultural theorist, Jackson Katz, argues that the ongoing epidemic of men's violence in America is rooted in our inability as a society to move beyond obscure ideals of manhood.

6 students attended the DASI presentation: Healthy Masculinity & Power Based Personal Violence Prevention, which provided present day examples of media's portrayal of gender. Discussion was conducted about how pressure from our culture's ideals of manhood impact individuals at different stages of life.

17 students participated in the Relationship Game (think Family Feud with questions regarding healthy relationships) in recognition of February as Teen Dating Violence Awareness Month, with participation and assistance from the SCCC Anti-Violence Club.

Attendance totaled **30** students at Taco 'bout it Tuesdays taking place in April, National Sexual Assault Awareness Month. Students received free tacos for participating interactive workshops on Healthy Relationships, Bystander Interventions, and Pornography Media Literacy.

Also in April, **6** students participated in an Open Mic opportunity at the Clothesline Project where students, staff, and community members were able to share and listen to music, poetry, and creative expression with the themes of empowerment, hope and social change.

DECIDE

DECIDE is a program for men who are seeking to stop the use of control and abuse in their relationships. The 26-week group program is based on an evidence-based model and is an educational intervention program that can help individuals understand that they CAN change. DECIDE is not an anger management or therapy group, but an educational program for change that is based on the beliefs that abuse and interpersonal violence are learned behaviors that can be unlearned and are social problems requiring changes at individual, institutional, and cultural levels.

109 individuals were helped by DECIDE this year

60 individuals were enrolled in groups, and **49** additional referrals were helped through case management

45% completed the program during the fiscal year

20% chose to return for support after program completion

85% identified as fathers or were living with or involved with children (total children affected=111)

85% were court referred or involved

53% were DCPD referred or involved

23% identified as voluntary, although many were also referred by court or DCPD

63% identified mental health treatment, symptoms or history

70% identified substance use disorder, treatment, history or repeated negative life consequences occurring while under the influence

52% reported co-occurring mental health and substance use disorders

60% had a criminal history

38% were unemployed or under employed at the time of admission. During the course of participation,

26% of this subset reported improved employment.

Morning Glory Thrift & Gift Shop

Morning Glory, DASI's ongoing fundraising initiative, generated an astounding \$106,837 in sales this year. Although shop expenses are quite high and only a small percentage makes up the proceeds that go to DASI, Morning Glory is a valuable asset to DASI. In addition to cash proceeds, donations continue to pour in from the generous Sussex County community who want nothing more than to help survivors and have a worthy destination for their unneeded items. Low income families can find much of what they need at low prices. And Morning Glory is a friend-raiser for DASI, providing enjoyable volunteer opportunities and a public space for raising awareness of the issues and our services.

Building Woes and Wows

DASI's Community Outreach office closed for two weeks in July due to extensive water damage to all 3 floors from leaks in the roof.

Hooray for the John and Margaret Post Foundation, the Sunshine Lady Foundation, the Community Foundation, and the Dept. of Children & Families for funds dedicated to critical repairs of our beautiful Historic Federal Style 1875 Community Outreach Center building! This building is the heart of many of our most vital services, and is in need of more than just a little TLC. We must continue our efforts to raise funds to complete the work!

Our Step by Step Transitional Living Apartments also had water damage due to a broken water pipe in the hallway. Hooray to the NJ Department of Community Affairs for a grant to renovate and repair our Transitional Living Apartments, including the water damage. Other renovation and repairs funded by NJ DCA included: roof drainage repair, new flooring in the children's play area, new kitchen appliances, renovation and repair to the bathrooms and kitchens, and replacement of furnaces and water heaters.

Staff Professional and Personal Development

DASI prioritizes ongoing professional training and development for our staff and volunteers. In addition to quarterly self-care and team building retreat days, this year the staff participated in the following training topics: Bail Reform; Case Management Approaches to Support Trafficked Victims of Domestic Violence and Sexual Assault; Coercive Control in Abusive Relationships; Collaborating to Address Trafficking in Rural Communities; Professional Communication; Cultural Competency; Danger Assessment; Dangerous Defense/Blackout/Sexual Assault; De-Escalation Techniques; Domestic Violence: Creative Approaches for Integration, Equality & Empowerment; Emotional Intelligence; End Violence Against Women International Conference on Gender Bias, Sexual Assault and Domestic Violence; Equal Pay and Sick Laws; Excellence in Nonprofit Leadership & Management; Exploring Restorative Justice; Family Violence Option Assessor Training; Forensic Experimental Trauma Interviews; Helping Domestic Violence Survivors with Interstate Custody Cases; How to Effectively Communicate and Advocate with Deaf and Hard of Hearing Survivors of Domestic Violence; Legal Services – Temporary Restraining Orders and Child Custody; Neurobiology of Sexual Assault; NJ Association of Domestic Violence Professionals Annual Conference; NJ Coalition Against Sexual Assault Culturally Inclusive Prevention Programming; NJ Coalition Against Sexual Assault Media Literacy Training; NJ Coalition Against Sexual Assault Safe Dates Training; Supporting Survivors in their Parenting Journey; Ontario Domestic Assault Risk Assessment; Opioid Epidemic in the Context of Trauma; Power Over Power: Applying Trauma Informed Approach; Preparing for Court Proceedings with Domestic Violence Survivors; Providing Services for Male Victims of Domestic Violence; Safety Planning; Sexual Harassment in Workplace; #metoo; Sexual Health to Support Sexual Assault and Domestic Violence Victims; Stalking on Campus; Training Tips for Coaching and Counseling Employees; Tools for Transformation: Become Accessible and Culturally Responsive; Trauma Focused-Cognitive Behavioral Therapy; Trauma Informed Legal Advocacy; Trauma Informed Response to Distress and Crisis; and, Women Who Use Force.



THANKS & APPRECIATION

Volunteers and Community Partners Helping DASI to Meet our Mission

DASI volunteers provide a wide variety of services to help us meet our mission, including domestic violence and sexual assault response teams, fundraising, reception and administrative support, donation pick-ups, helping out at the Morning Glory Shop, yard maintenance, and client activities and services. **93** volunteers provided **5,119** hours of service this year!

Honored at the 2018 DASI Volunteer Appreciation Dinner:

- Debora Meltz Volunteer of the Year - Pat Zdichocki
- Morning Glory Shop Volunteer of the Year - Dawn Palmer
- Service Volunteer of the Year - Lucy Katzen

Community Partners help fill in the gaps to meet the needs of our clients in ways that we never could without them. 2018 Community Partner Awards went to Valerie Macchio & the SEC Food Pantry, John Kruger and Circle Brook Farm, Elaine Kuntz and Barbara Fimia & the Vernon Women's Club, and Lindsay Campbell & the Sussex County Chapter of NOW.



A special thank you to all of our community partners for your incredible generosity and support:

BW NICE Red Shoe Event, "Steppin' Out for DASI"
Garden of Life Wellness Day
Hopatcong Women's Club
Sussex Women's Club
Project Self-Sufficiency
Women's Club of West Milford
Sparta Womens Club - Circle of Yarn
Breezy Hill Farm
Longmeadow Farm
Godlewsky Farms
Race Farm

Circle Farms
Longmeadow Farm
K of C Father Joseph A. Cassidy Council 6100
DKG Teachers Nat'l Honor Soc
Delta Kappa Gamma
Fonzarelli's Collision
Cubscout pack 206/287
Girl Scout Troop 96094
Girl Scout Troop 97272
Lake Mohawk German Christmas Market



EVENTS

Clothesline Project Newton

Clothesline Project SCCC

In honor of Sexual Assault Awareness and Child Abuse Prevention month, DASI and Ginnie's House present a visual protest of empowering t-shirts. These bear witness to sexual assault, domestic violence, and child abuse within our community, providing a forum for survivors and supporters to speak out. T-shirts are created and displayed to reflect individual experiences and expressions of anguish and hope.



Annual Candlelight Vigil

Each year DASI hosts a candlelight vigil to remember those who have died at the hands of domestic violence, those who are still suffering and to celebrate survivors of domestic violence. This year's Full Circle Award was given to the members of DASI's RiseUp! Poetry Group.

New Initiatives

This year DASI launched a Workplace Violence Prevention initiative designed to increase the safety and security of our staff and our buildings. With the help of Steven Crimando of Behavioral Science Applications this program is consistent with the recommendations and guidelines defined by OSHA, the national standard, and international authorities. It involves a six-step process to establish policies, plans, protocols, and mechanisms to recognize, respond to, and recovery from potentially violent situations, as well as a strategy to evaluate the effectiveness of and sustain the violence prevention program into the future.

FINANCIALS



Expenses less depreciation

Non-Residential Services:	\$1,033,620
Residential Services:	\$389,214
G&A:	\$199,755
Fundraising includes Morning Glory Shop:	\$163,839
Total:	\$1,786,428



Income

Grants:	\$1,429,670
Federal:	\$486,026
State:	\$888,281
County:	\$49,363
Other:	\$6,000



Fundraising & Donations:

Morning Glory:	\$106,837
All Other:	\$271,577



Program Fees:

\$14,754

Other Income:

\$3,549

TOTAL

\$1,826,387

DONORS

\$500 AND BELOW

Kathy Abate
ABCODE Security
Advanced Dental Techniques
Alberto & Cho Oral & Maxillofacial Surgery Group
Marel Albrecht
Laura & Byron Alcantara
Ancona, Dr. Frank
Lois Angelus
Angry Erik Brewing
Michael Antonello Trust
Marianne Antonello
Arcidiacono, Steven J.
Arthur Murray Dance Studio
Marshall L. Badgley
Nicole & Bill Baker
Lauren Beach
Pat Beach
Beekman1802
Jack Bemporad
Deneen Bennett
Kim Bennett
Dean Blumetti
Amy Bogdon-Abrams
Angelo Bolcato
Rosalie Borup
Stephen Brady
Christopher & Jaclyn Brancato
Branchville Rotary
Katherine Briand
Neola Bricuyet
Sandra Budz
Sophie Cable
Margarita Cart
Lyria Charles
Andrew Clark
Sarah Clark
Laura Cole
Joseph T. Collura
Walter H. Cramp
Cuts & Beyond
Stephanie Chilingierian
Christ Union Chapel - North Shore Culver Lake
Jean Clark
Sarah M. Coraggio
Christopher J. Curry
Jutta Czachorowski
Savvy E. Darragh
Alexander J. Davies
Cassandra DeLucchi
Kailey Denzer
Regina Diverio
Wendy Doige
Lora Downey
Dance Expression Dance Arts, LLC
Davara Industrial Center LLC
Deacons of Franklin Presbyterian Church
Bjorn-Jessica Debear
Lorraine DeProspo
Bill & Lauren Dermody
Walter Drag & Laurel Denzer
Danielle Dykstra
Frank & Robin Elmo
Catherine Epstein
Sandra Erwin
Cindy Everitt
Gail Pascale Ewin
Gwen Federico
Jennifery Ferry
First Presbyterian Church Of Branchville
First Presbyterian Church Of Sussex
Vivian Fischer
Rich & Carey Fancher
David Farkas
Farmstead Golf & County Club
Farmstead Women's Golf League
Valleri Francis
Franklin-Ogdensburg-Hamburg FOP Lodge 57
Freedom Business Machines
Diane Francis
Garden Of Life Massage & Yoga Center, Inc.
Frank Gargin
Garlic & Oil
Marcia Geltman
Robert & Michele Gensheimer
Rae Ann Gerow
Marie Goble
Mary Gebhard
Janice Gelson
Alice Gianni
Anne Ginkel
Give With Liberty
Gruber, Colabella, Liuzza & Thompson
William Gundersdorf
Barbara Gold
Pat Granda
Carol Gray
Sheila Grodsky
Jacqueline Haftek
Marybeth & John Hales
Manfred M. Haertig, Jr.
Hope Hartman
Sanford L. Hollander, Esq.
HQW Architects LLC
Tammi & Glenn Huff
Tiffany & Mario Heineman
Linda Hendrixson
Steffnie Higgins
Beth, Paul & Moses Hughes
Jacqui Hyland
Phyllis Ianniello
Jana Jackson
Nancy Jacobus
Mark Jensen
Jewelry By Christabel
Hope Jinean
Lenor Johnson
Junior Women's Club Of Sparta
Kelly Keebler
Sharon Kelly & Robert Williams
Dr. Jerome & Harriet Kesselman
Jin Kim
Tracy & Eric Kinsey
David Karlberg
Lucy Katzen
Jessica Kibblewhite
Kiwanis Club Of Sparta
Elaine Koplw
William E. Kulsar
Jake Lepore
Donna T. Logan
Karen Loree
Lambert Family Foundation
Monica Litvany
Dawn Lombard
Rosner-Gross, Kathi
Roy, Leah
Elsie Lorber
Trish Lynam
Patricia Lynch
Ida Machuca
Making Strides Therapeutic Riding LLC
Amanda McConnell
Harriet McCormack
Judith McCue
Ann-Marie P. McKenna
Michelle McKenney
Carol McKinney
Connie A. Meehan
Diane M. Mitchell
Alan Mallach
Linda Meek
Elmer Mirro
Kathy Moser
Alex Munoz-Suarez
Dennis & Lori Murray
Steven Moran
Mud & Soul Clayworks
Kristin Muller
North Country Pharmacy
NJCASA
Barbara M. O'Neill
Onore Fine Taibre
Senator Steven & Rita Oroho
Christine Olivo
Donna M. O'Reilly
Priscilla Orr
Oxygen
Jennifer Passerini
Perona Farms
Pet Spa And Resort
Howard R. Pollison
Hank Pomerantz
Peters Valley Gallery
Kevin Prendergast
Presbyterian Women Of Sparta
R. Poust, Inc.
Pamela Ricker
Laura Pondiscio
Mary Rewalt
RoNetco Supermarkets Inc.
Kathi Rosner-Gross
Robin Lennon Uncommon Artwear
Dawn Roff
Nancy Root
Rotary Club Of Jefferson And Sparta
Leah Roy
Cathy Rudder
Norma Rung
Dorothy Sabarese
Wayne F. Sabins
Audrey Safin
Vivian Sauter
S. Sciascia DMD & J. Tauber DMD, PA
Lynn Scott
Scott Seidel
Alice J. Siegel
Carolyn Sieja
James A. Sinatra
Tricia Smith
Jeffrey Schnare
Jaime Schneider
Linda Schneider
Rhoda & Norman Seider
Sharick Associates, Inc.

\$500 AND BELOW *(continued)*

Jayne Sheehan & Janice Murphy
Kim Soroka
St. Mary's Episcopal Church
Susan & Sovann Stark
Sussex County Charter School For
Technology
Gloria Snook
Somerset Patriots
Sparta Farmers Market
Shelley Speirs
St. Moritz Grill And Bar
Peter Stanchfield
Bernice Stiff
Allison Struble
Sussex County Miners
Janet L. Swift
Deb Swink
Thomas Szabo

Donna M. Tappan
Patricia R. Taranto
The Stearns Family
Techflex Inc-A Division Of Dermody
Associates Inc
Kate & Kevin Terrell
John Tremont
George Tsemberlis
Laura Tillman
Sharon L. Tolvay
Steve Toth
Lorraine & Michael Tully
Tyramin, Jenna Wetmore
Unitarian Universalist Fellowship Of
Sussex County
Unity Of Sussex County
United Methodist Women Of Sparta
Robert Vandenberg

Joanne Vindici
Jamie Wagner
Annie Walker
Elizabeth Walker
Robert Weeks
Wendi Weill
Weis Markets
Cat Williford
Jeffery Winkler
Heidi Wohlleb
Lynn Wolf
Carol Williams
Bernadette Winters
Anastazja Zvoleff
Christine Zelinsky

OVER \$500

Sarah Cable
Camp Six
Debra Clark
Miyoun Dobbs
Eye Care Northwest
David Flynn
Lakeland Charities
Laura Lampron
Sarah W. Larson
Jody Lepore
Michael Mohammadi
Valerie & Edward Munro
Marvin & Frances Naftal
James Pepe
Sarah Larson & David Flynn
Kim Spangenberg
Sparta Woman's Club, Inc.
Stonewood Tavern
Wawa Foundation

OVER \$1000

Allstate Foundation
Jennifer Cable
Calmoseptine Incorporated
Dover Dodge Used Car Center
Franklin Mutual Insurance Co.
Institute for Poetic Medicine
Investors Foundation
ISOLATEK
Lake Mohawk German Christmas
Market
Debra & David Meltz
Edward Muller
National Network To End Domestic
Violence (NNEDV)
Nisivoccia LLP
Honorable Lorraine & George Parker
R.B. Painting
SB One Bank
Donald & Joanne Scheidt
Sparta Pharmacy Corporation
Gayle Uhlenburg
Frederick Wright
Zonta Club Of Ringwood

Over \$5000

Frank & Janet Allocca
Jamie Bernard & Charles Ross, MD
BW NICE, Inc.
The Community Foundation
Beverly & Bruce Gordon
James Alexander Corporation
The John & Margaret Post Foundation
Sella Foundation Trust
Sunshine Lady Foundation

Over \$50,000

ThorLabs

Foundations Grants

Calmoseptine Incorporated
Community Foundation
Institute for Poetic Medicine
Investors Foundation
John & Margaret Post Foundation
Lake Mohawk German Christmas Market
SB One Bank
Sunshine Lady Foundation
Wawa Foundation

Government Grants

Federal Emergency Management Agency
NJ Department of Children & Families
NJ Division on Women
NJ Department of Consumer Affairs
NJ Division of Criminal Justice
NJ Department of Law and Public Safety
Sussex County Grant-in-Aid
Sussex County Chapter 51



DASI

Domestic Abuse & Sexual Assault Intervention Services

www.dasi.org